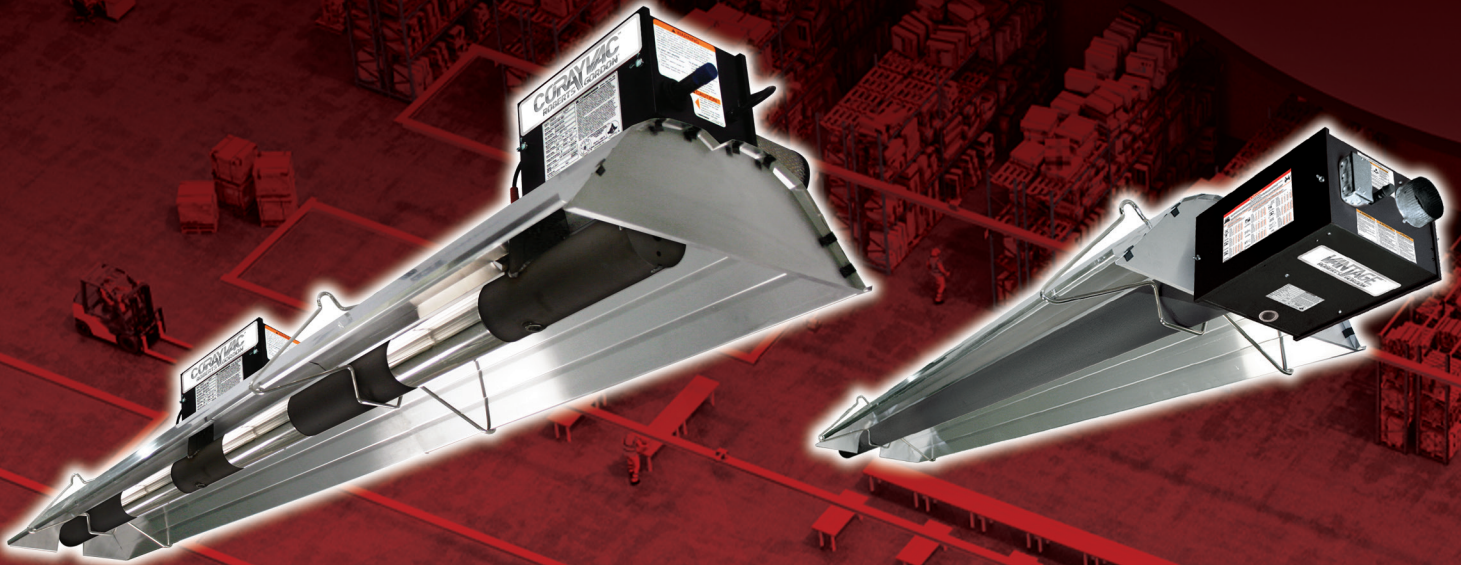
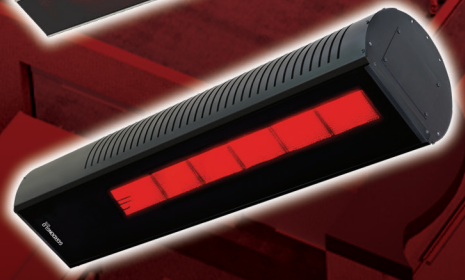
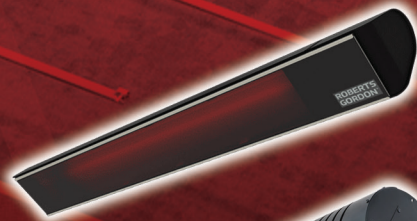


PURPOSE BUILT INFRARED SOLUTIONS BACKED BY DECADES OF INNOVATION



For Industrial, Commercial, and Residential Spaces



ROBERTS GORDON®

THE EXCLUSIVE PRODUCER OF CORAYVAC®

GAS LOW-INTENSITY RADIANT HEATERS

Applications



Industrial

Warehouses, distribution centers, manufacturing, vehicle service centers, municipal buildings

Commercial

Retail stores, auto dealerships, loading docks, airplane hangars, restaurant patios, car washes

Agricultural

Greenhouses, poultry barns, dairy facilities, equipment sheds

Residential

Workshops garages, patios

Benefits



Clean, quiet heating



Greater efficiency and comfort at lower temperatures compared to traditional heating systems



Aesthetically pleasing



Quick heat recovery



Easy to install and maintain



Delivers nearly 100% of energy as usable heat



Reduced energy costs as floors absorb heat and help heat the surrounding space



Reduced heating electricity cost



Less heat stratification



Reduced building heat loss

Universal Features

- Ceiling-mounted to free valuable floor space
- Broad range of inputs and tube lengths to fit various building sizes and floor plans
- Straight, u-tube, or L-shaped configurations for unitary heaters
- Durable components provide long equipment life
 - Powder-coated burner box with protective enclosure for controls helps minimize exposure to contaminants
 - Aluminum, high efficiency, or stainless-steel reflectors
- Deep-dish, parabolically-designed reflectors help maximize energy reflection and minimize heat loss
- Hot rolled, aluminized, heat-treated aluminized, or porcelain coated tubing
- Side reflectors or tilted reflectors concentrate heat where needed
- Detailed installation, operation, and service manuals for easy installation and service
- Industry-leading 3-year warranty
- CSA-design certified to meet industry standards



CORAYVAC® High Efficiency Condensing System CRV

- **Btu/h (x 1,000):** 20, 40, 60, 80, 90, 100, 110, 120
- **Approved:** Indoor (Vented)
- **Certification:** ANSI Z83.20/CSA 2.34, 2.17
- **Fuel:** NG or LPG propane

Features

- Custom engineered system provides a variety of design options
- Burner-in-series design provides even heat distribution, reduced energy use, and greater comfort
- Zero regulator incorporated in burner provides excellent efficiency, ideal combustion, and safety
- Low clearances to combustibles maximize usable space
- Multiple burners per pump reduces building penetrations
- Pair with ROBERTS GORDON® Controls for precise comfort and enhanced energy savings
- CRV SF models available - custom designed for specialty fuel (SF) vehicle repair garages

GAS LOW-INTENSITY RADIANT HEATERS

VANTAGE® Family of Premium Heaters – Modulating, Harsh Environment, or Standard Models

Modulating CTH3 - Precise Air-to-Gas Ratio for Enhanced Fuel Savings

- **Maximum Btu/h (x 1,000):** 80, 115, 150, 190 (LPG), 200 (NG)
- **Minimum Btu/h (x 1,000):** 52/55, 75/78, 100/105, 130/135
- **Minimum Tube Lengths (ft):** 20, 30, 40, 50
- **Approved:** Indoor (Vented or Unvented)
- **Certification:** ANSI Z83.20/CSA 2.34
- **Fuel:** NG or LPG propane

Features

- Fully automatic or manual control of burner modulation provides fuel efficient operation
- Pre-programmed burner controls adjust both fuel and air for efficient, optimum combustion
- Protective enclosure for controls helps minimize exposure to dirt and moisture
- Diagnostic capabilities onboard provide system operation and ease of service

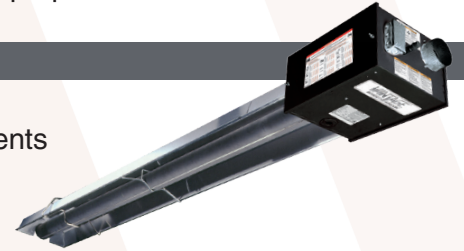


Harsh Environment HEV – Industrial-Grade to Withstand Harsh Climates

- **Btu/h (x 1,000):** 40, 65, 80, 100, 125, 150, 175,
- **Minimum Tube Lengths (ft):** 10, 20, 30, 40, 50
- **Approved:** Indoor and Outdoor (Vented or Unvented)
- **Certification:** ANSI Z83.20/CSA 2.34, 2.17, 2.20
- **Fuel:** NG or LPG propane

Features

- Durable construction to withstand winds up to 40 mph
- Sealed burner box provides long-lasting performance in high moisture environments
- External LED burner status indicator
- On-board diagnostics
- 24VAC thermostat connection

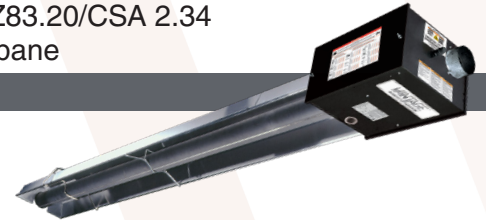


Outdoor Modulating HEM - Energy Efficient Solution for Outdoor Spaces

- **Maximum Btu/h (x 1,000):** 80, 115, 150, 200 (NG)
- **Minimum Btu/h (x 1,000):** 52/55, 75/78, 100/105, 130
- **Minimum Tube Lengths (ft):** 20, 30, 40, 50
- **Approved:** Outdoor and Indoor (Vented or Unvented)
- **Certification:** ANSI Z83.20/CSA 2.34
- **Fuel:** NG or LPG propane

Features

- Heavy duty, industrial-grade heater for long-lasting performance
- Efficient and optimum combustion throughout full range of burner inputs
- Burner box enhanced with stainless steel fasteners for harsh elements
- Spot welded, sealed burner box with weather resistant gaskets helps keep moisture out
- Fully automatic or manual control of burner modulation with potentiometer
- Optional protective grille for radiant tube coverage



Negative Pressure CTHN – Delivers Custom, Even Heating

- **Btu/h (x 1,000):** 40, 60, 80, 100, 125, 150, 175, 200
- **Minimum Tube Lengths (ft):** 10, 20, 30, 40, 50
- **Approved:** Unitary - Indoor (Vented or Unvented);
Multiburner - Indoor (Vented)
- **Certification:** ANSI Z83.20/CSA 2.34, 2.17
- **Fuel:** NG or LPG propane

Features

- Negative pressure design with uniform tube temperatures provides even heat distribution
- Choice of standalone unitary heater or multiple heaters connected to common manifold
- Multiburner systems allow for reduced burner penetrations and installation costs



Field-Proven CTH2V – Versatile Single-Stage Technology

- **Btu/h (x 1,000):** 40, 60, 80, 100, 125, 150, 175
- **Minimum Tube Lengths (ft):** 10, 20, 30, 40, 50
- **Approved:** Indoor (Vented or Unvented)
- **Certification:** ANSI Z83.20/CSA 2.34, 2.17
- **Fuel:** NG or LPG propane

Features

- Diagnostic capability incorporated in burner design
- Convenient, external low voltage thermostat connection for easy installation
- Combustion air intake collar
- External LED burner status indicator
- Years of field-proven product performance



GAS LOW-INTENSITY RADIANT HEATERS

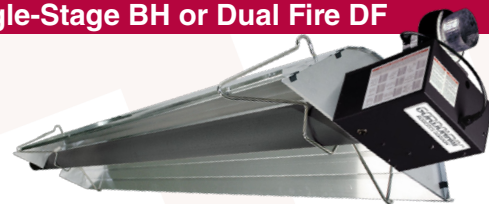
GORDONRAY® Economical, Versatile Tube Heaters – Positive Pressure Single-Stage BH or Dual Fire DF

BH/DF Unitary Heater Features:

- Positive-pressure burner design
- Hinged burner box for easy access to electrical components
- Years of field-proven product performance

Certification: ANSI Z83.20/CSA 2.34, 2.17, 2.20

Approved: Indoor (Vented or Unvented)



Additional BH Features:

- **Btu/h (x 1,000):** 40, 60, 80, 100, 115, 125, 140, 150, 175, 200
- **Minimum Tube Lengths (ft):** 10, 20, 30, 40, 50
- **Fuel:** NG or LPG propane

Additional DF Features:

- Two stage technology produces a comfortable heat pattern by the ability to fire at two distinct rates
- External LED burner status lights indicate high or low operation
- **Btu/h (x 1,000) High:** 80, 100, 125, 150, 175, 200
- **Btu/h (x 1,000) Low:** 55, 70, 85, 105, 120, 130
- **Minimum Tube Lengths (ft):** 20, 30, 40, 50
- **Fuel:** NG only

CARIBE® Factory-Assembled, Residential/Light Commercial CGTH – Small Space Utility Heater

- **Btu/h (x 1,000):** 30, 40, 50
- **Overall Lengths (ft, in):** 8; 11,6
- **Approved:** Indoor Vented Overhead Room Heater
- **Certification:** ANSI Z21.86/CSA 2.32
- **Fuel:** NG or LPG propane



Features:

- Factory assembled with a compact u-tube design to deliver maximum inputs at minimum tube lengths
- Balanced flue for both exhaust and combustion air means only one building penetration
- Low voltage, 24VAC dual scale included (connected via built-in receptacle)

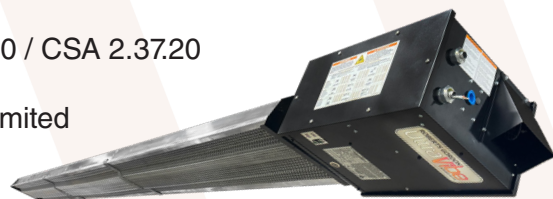
UltraVibe™ VOH - Keep the Outdoor Vibe Warm and Inviting Year-Round

- **Applications:** Restaurants, bars, patios, balconies, wineries, breweries, driving ranges, rooftop lounges, residential decks, and gazebos
- **Gas Two-Stage Heater Benefits:**
 - Adjustable, targeted heat for open-air environments via two-stage operation
 - Reduced energy bills from operating on low stage to maintain temperature

- **Benefits:**
 - Expanded outdoor seating capacity - more patrons means more revenue
 - Saves valuable floor space - ceiling or wall mounted under awnings, patios, and covered areas
 - Keeps furnishes and occupants warm and dry
 - Quiet operation - no running fan to interfere with guest experience
 - Attractive design - complements virtually any outdoor space

- **Btu/h (x 1,000) High:** 80, 100, 125
- **Btu/h (x 1,000) Low:** 55, 70, 85
- **Overall Lengths (ft, in):** 11,5; 16,5; 21,5
- **Approved:** Outdoor (Unvented)

- **Certification:** Z83.26.20 / CSA 2.37.20
- **Fuel:** NG only
- **Warranty:** Three-year limited



Features:

- Hexagon-patterned aluminum grille for enhanced safety and aesthetics
- External LED lights indicate high or low burner operation
- Weather vent, vinyl coated stainless steel gas line, aluminized tubing, and choice of aluminum or stainless-steel reflectors, stand up to the rigors of harsh climates

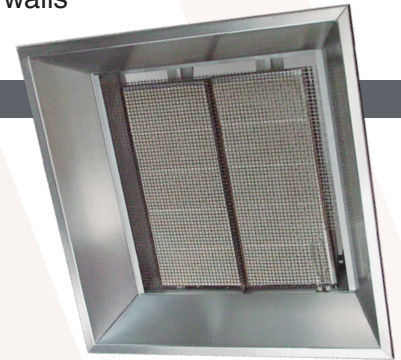
GAS HIGH-INTENSITY INFRARED HEATERS

INDUSTRIA™ GG - Target Heat Where Needed

- **Applications:** Loading docks, auto service bays, warehouses, or other areas where large doors are opened frequently
- **Btu/h (x 1,000):** 33, 35, 40, 65, 66, 70, 80, 99, 100, 120, 132, 140, 160
- **Approved:** Indoor (Unvented)
- **Certification:** ANSI Z83.19/CSA 2.34 (NOT certified for residential use)
- **Fuel:** NG or LPG propane
- **Warranty:** Five-year limited ceramic (burner), one-year limited (controls)

Features:

- Factory assembled, easy to ship and install
- Compact design with honeycomb shape ceramic provides a higher concentration of radiant heat
- Surface temperature up to 1,800° F
- Can be mounted from 0° - 35°
- 100% gas shut-off for safety control
- Industrial grade aluminized steel construction for increased longevity
- Highly reflective aluminum reflectors



GordonGlo™ Elite High-Intensity GGE - Exceptional Comfort Built to Last in Outdoor Spaces

- **Applications:** Restaurants, bars, patios, balconies, wineries, breweries, driving ranges, rooftop lounges, residential decks and gazebos
- **Benefits:**
 - Expanded outdoor seating capacity - more patrons means more revenue
 - Saves valuable floor space - ceiling or wall mounted under awnings, patios, and covered areas
 - Keeps furnishings and occupants warm and dry
 - Quiet operation - no running fan to interfere with guest experience
 - Attractive design - complements virtually any outdoor space

- **Btu/h (x 1,000) High:** 35, 50
- **Btu/h (x 1,000) Low:** 24, 34
- **Approved:** Indoor (Vented) or Outdoor (Unvented)
- **Certification:** CSA design certified – ANSI Z83.19 & ANSI Z83.26 Standard

Features:

- Durable construction to withstand extreme rain or snow, even winds up to 40 mph
- Horizontal or angle mounting to direct heat where needed
- Optional remote control with three-position control switch, heat shield, mounting bracket
- Environmentally-conscious – NOx emission levels as low as 15 parts per million adjusted for 3% O2

- **Gas Two-Stage Heater Benefits:**
 - Adjustable, targeted heat for open-air environments via two-stage operation
 - Reduced energy bills from operating on low stage to maintain temperature

- **Fuel:** NG or LPG propane
- **Warranty:** Three-year limited (burner assembly), one-year limited (controls)



ELECTRIC HEATERS

Compact Unit Heater EUHC - Maximum Performance, Space-Saving Design

- **Applications:** Indoor shipping docks, power stations, mechanical/maintenance rooms, factories, warehouses, residential garages/workshops
- **Benefits:**
 - Powerful performance, compact size for tight spaces
 - Maximum flexibility for a wide range of building sizes and types
 - Quick, easy installation - piping flues, valves, or traps not required for installation
 - Year-round comfort with fan-only mode

- **kW:** 2.3, 3, 3.8, 5, 7.5, 10, 11.3, 15, 20
- **Approved:** Indoor (Commercial/Industrial). 3kW and 5kW approved for Residential, non-living spaces.
- **Certification:** ETL certified to UL Standard 2021 and CSA C22.2 #46 for use in the US and Canada
- **Warranty:** Five-year electrical and mechanical parts



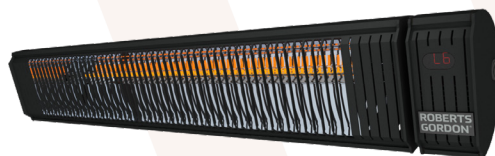
Features:

- Modern design, appliance-grade finish, and robust construction
- Stainless-steel and finned heating elements enable long life and resistance to thermal shock and vibration
- Swiveling allows complex angles to direct heat
- Vertical, horizontal mounting, or every 15° in between
- Multi-voltage/phase capable models
- Standard 24VAC control for low-voltage thermostats
- Fan guard for added safety
- Basic ON/OFF to multi-unit thermostat control

GordonGlo™ Elite High-Intensity GGEL - Instant, Efficient, Targeted Warmth for Indoor, Outdoor, and Semi-Enclosed Spaces

- **Applications:** High-end restaurants, bars, and hotels; luxury and commercial patios, large residential decks, multi-unit housing, and other design-forward residential/commercial spaces
- **Watts:** 1,500; 3,000; 6,000
- **Overall Lengths (in):** 27, 39, 42
- **Approved:** Indoor/Outdoor (Commercial) and Outdoor (Residential)
- **Certification:** cETLus / UL2021 / CSA22.2
- **Warranty:** One-year limited

- **Benefits:**
 - High energy efficiency - converts energy directly into radiant heat, minimizing waste and lowering operating costs
 - Instant warmth - via a soft, low glare glow directing heat to people and surfaces
 - Durable construction - long-lasting carbon fiber heating element, aluminum housing, and an IP65 weather-resistant rating help reduce service needs, and maximize product lifespan
 - Application flexibility - choice of architectural, premium, slimline model and industrial-modern, robust aluminum model



Features:

- Two distinct design aesthetics:
 - Glass-Front Model
 - Ultra-low-light filtering ceramic glass provides high-end visual comfort while still transmitting heat
 - Ultra-slim architectural profile enhances modern, design-forward spaces
 - Standard Models
 - Open, ventilated structure with protective grille supports airflow and efficient radiant heating while enhancing industrial décor
- Brackets (included) for simple wall or ceiling mounting enable flexible installation
- Convenient controls (1500W & 3000W models) - onboard power switch plus IR remote with 6-stage heat settings means external control box not required
- Only one (1) replacement part: lamps – easy to service and stock

ELECTRIC SPECIALTY HEATERS

Docked Trailer DTH – Delivering Comfort and Driving Productivity for Loading Docks

- **Applications:** Commercial and industrial loading docks
- **Benefits:**
 - Safer work environments - helps reduce cold exposure and can help reduce risk of slips and falls from icy conditions
 - Rapid comfort
 - Year-round use with fan-only mode
 - Lower energy costs
 - Boosted productivity - more focused, efficient, comfortable employees
 - Reduced downtime - helps minimize trailer queues and wait times
 - Freedom of movement - no need for bulky winter gear inside trailers
 - Easy installation and operation
- **kW:** 13, 17.7, 18, 30
- **Approved:** Indoor (Commercial/Industrial)
- **Certification:** Listed by Intertek to UL 2021 and CSA C22.2 #46 for use in the US and Canada
- **Warranty:** Five-year electrical and mechanical parts

Features:

- Durable, weather-resistant galvanized steel cabinet
- Mounting kit for common installations provided
- Field-built mounting hardware provided for quick, easy connection
- Wall-mounted control panel with push-button operation
- Impact-resistant flexible chute
- Low-noise, vibration-isolated fan motor



AIR CURTAINS

RGAC (Unheated) and RGACE (Heated) – Helps Prevent Air from Entering a Climate-Controlled Environment

- **Applications:** Retail, grocery, warehouses, factories, office entryways, vestibule replacement, doors between heated/unheated or cooled/uncooled sections of a building
- **Benefits:**
 - Optimum comfort from innovative plenum design
 - Environmental protection - wall of air blocks insects and prevents infiltration of contaminants
 - Climate control - thermal barrier of air maintains interior temperature, especially near doors
 - Energy savings - keeps conditioned air inside, complementing the primary HVAC system, helping reduce load on HVAC units
 - Increased building space - American Society of Heating, Refrigerating and Air Conditioning Engineers (ASHRAE) Standard 90.1 approved the usage of air curtains as an exception to vestibules
- **kW:** 10, 20, 30, 40
- **Approved:** Meets criteria for vestibule exception - tested in accordance with ANSI/AMCA 220 and meets ASHRAE 90.1 and IECC requirements. Also meets criteria for food and food service establishments NSF 37
- **Certification:** ETL for United States and Canada; AMCA tested performance
- **Warranty:** Three-year limited

Features:

- Attractive, modern design, and quiet operation
- Innovative plenum design evenly distributes air creating an inviting space for occupants
- Sturdy construction, corrosion-resistant painted steel, heavy-duty direct-drive motors, flexible mounting options, and galvanized fans
- Multiple control options



RADIANT HEATING CONTROLS

Amplify the performance of ROBERTS GORDON® infrared heaters in commercial and industrial settings

ROBERTS GORDON® Heating Controllers - Simple, Smart, Powerful Control for Modern Spaces

• Benefits:

- Energy savings, precise comfort - continuously adjusts heat output based on outdoor air and design temperatures
- Flexible zone control - manage two heating zones with one vacuum pump using four flexible operating modes
- Streamlined facility-wide control - operates independently or compatible with BACnet® BMS
- Installation flexibility
- Fast setup, easy updates
- Built for demanding environments

• Listings:

- Enclosure: NEMA 4X/13, UL508 A, IEC 62208, UL
- Control board: Programmable Controller, IEC 61000-4-5, EN 60068-2-6Fc, UL 60730-1, UL 60730-2-9, CSA E60730-2-9, EN 607302-9 UL94
- Touchscreen: PLC Product Certifications, CSA, EAC, RCM, CE, cURus, ICE6131-2

• Warranty: Three-year limited

BACnet® is a trademark of ASHRAE.



Features:

- User-friendly touchscreen with real-time data and diagnostics for simple operation
- Three indicator lights for instant zone status checks
- Water-tight, corrosion-resistant enclosure
- 18 input/output (I/O) points handle complex heating demands
- Pre-programmed for plug-and-play simplicity, eliminates the need for hardware and software
- Separate Variable Frequency Drive (VFD) can be installed anywhere between the controller and pump, reducing wiring time and cost

CORAYVAC® Heating Control - Stand Alone Zoning Control

• Benefits:

- Flexible zone control - capable of operating up to two heating systems and four heating zones
- Increased longevity from durable enclosures
- **Approved:** ETL Intertek 5001470; Conforms to UL STD 873
- **Certification:** CAN/CSA STD C22.2 NO. 24
- **Warranty:** Three-year limited



Features:

- Powder coated steel, hinged door, removable knockouts
- Pre-programmed thermostats
- Nine - visual (LED) status of power to 4 - zones;
2 – Pump Power; 2 - Pressure Switch; 1 - Line Power
- IP20 rated



Contact your local representative.
Visit: www.robertsgordon.com/distributors

ROBERTS GORDON®
The Exclusive Producer of **CORAYVAC®**

Roberts-Gordon LLC 1250 William Street Buffalo, NY 14206 Telephone: +1.716.852.4400 www.robertsgordon.com

© 2026 Roberts-Gordon LLC All rights reserved. No part of this work covered by the copyrights herein may be reproduced or copied in any form or by any means – graphic, electronic, or mechanical, including photocopying, recording, taping, or information storage and retrieval systems – without written permission of Roberts-Gordon LLC.



RGAPLCNA

0326 Rev B